

Striving for Excellence

Cirencester Kingshill School



GCSE ASSESSMENT GUIDE 2021

How will I be assessed?

May 2021



Striving for Excellence

Cirencester Kingshill School



Introduction

For the Summer 2021 Examination process, examination boards are awarding grades based on teacher assessment. We have prepared this guide to help clarify what will be used to assess pupils this year for each of their subjects.

In line with JCQ guidance, we will be explaining this to pupils in each of their classes in school as well as publishing on the website. The guidelines stipulate that pupils need to be told how they are being assessed, but that the choice of the evidence base used lies solely with the school and is non-negotiable.

We hope you find this useful; however should you have any questions, please contact Mr Pritchard, Deputy Headteacher.

spritchard@cirencesterkingshill.gloucs.sch.uk



Striving for Excellence

Cirencester Kingshill School



GCSE 3D Design

The key assessments used to determine grades for GCSE 3D Design for Year 11 2021 will include the following:

- Work produced in sketchbooks over the course (including research, samples, modelling, designing, written communication and practical project outcome).



Striving for Excellence

Cirencester Kingshill School



GCSE ART

The key assessments used to determine grades for GCSE Art for Year 11 2021 will include the following:

- Completion of as much of the portfolio work as possible.

NB: For Art, there is no examination and pupils will be judged purely on the portfolio work that they have actually produced.



Striving for Excellence

Cirencester Kingshill School



BTEC Art and Design

The key assessments used to determine grades for BTEC Art and Design for Year 11 2021 will include the following:

- Internal assignments (units 1, 6, 5, 11, 18 & 16).
- External assessment piece for unit 2.
- Internal assessment of practical skills.
- Records of pupil work from Year 10 and Year 11.



Striving for Excellence

Cirencester Kingshill School



BTEC Children's Play, Learning and Development

The key assessments used to determine grades for BTEC Children's Play, Learning and Development for Year 11 2021 will include the following:

- A minimum of 7 assignments taken from the work completed on units 2 and 3.



Striving for Excellence

Cirencester Kingshill School



GCSE Computer Science

The key assessments used to determine grades for GCSE Computer Science for Year 11 2021 will include the following:

- A series of past papers taken by pupils around the Easter Break.
- Test results from GCSE mock examination paper taken in Year 10, September 2020.
- The practical programming work pupils have done towards the practical component of the course.



Striving for Excellence

Cirencester Kingshill School



GCSE Drama

The key assessments used to determine grades for GCSE Drama for Year 11 2021 will include the following:

- On-going teacher assessment of practical aspects set against the relevant components of the syllabus.
- A minimum of 3 formal written assessments based on plays that the pupils have covered, and using past papers and assessment materials released for use for this year.



Striving for Excellence

Cirencester Kingshill School



GCSE English

The key assessments used to determine grades for GCSE English for Year 11 2021 will include the following:

- Two English Language papers.
- Two English Literature papers.

NB: All papers include examination assessment materials provided by the examination board (AQA). They have been specifically created for this summer, and pupils have only been assessed on material that has been taught.



Striving for Excellence

Cirencester Kingshill School



GCSE Fashion and Textiles

The key assessments used to determine grades for GCSE Fashion and Textiles for Year 11 2021 will include the following:

- Sketchbook work (including research, samples, modelling, designing, written communication and practical outcomes).



Striving for Excellence

Cirencester Kingshill School



GCSE Food and Nutrition

The key assessments used to determine grades for GCSE Food and Nutrition Year 11 2021 will include the following:

- A written examination: 50% of qualification.
 - Consisting of 2 sections both containing compulsory questions, and this will assess the six areas of content as listed in the specified GCSE content.
- Non-Examined Assessment (NEA) 2: 12 hours 50% of qualification.
 - Food preparation assessment, prepare cook and present a menu. This assessment was based on a Picnic theme.
- Theory based learning and in class assessments based on knowledge and understanding of their workbook material.
- Weekly teacher assessments of practical skills set internally.



Striving for Excellence

Cirencester Kingshill School



GCSE French

The key assessments used to determine grades for GCSE French Year 11 2021 will include the following:

- A full suite of past papers from the examination board, covering all topics taught.
- Written assessments covered in class.



Striving for Excellence

Cirencester Kingshill School



GCSE Geography

The key assessments used to determine grades for GCSE Geography Year 11 2021 will include the following:

- Assessments using past papers and examination board assessment materials. There are 5 assessments and they will cover sections that were taught in school and online.
 - a) The Challenge of Natural Hazards.
 - b) Coastal Landscapes.
 - c) The Living World.
 - d) The Changing Economic World.
 - e) The Challenge of Resource Management.

These assessments are to be carried out in class between March and May 2021.

- Assessments carried out prior to January 2021. This will include results of past papers used for a variety of assessments throughout Year 10 and Year 11. These assessments were used to provide evidence of the performance grade sent home in March 2021.



Striving for Excellence

Cirencester Kingshill School



GCSE German

The key assessments used to determine grades for GCSE German Year 11 2021 will include the following:

- A full suite of past papers from the examination board, covering all topics taught.



Striving for Excellence

Cirencester Kingshill School



GCSE History

The key assessments used to determine grades for GCSE History Year 11 2021 will include the following:

- Assessments using past papers and examination board assessment materials. There are 4 assessments and they will cover 2 of the units that were taught in school and online.
 - a) Conflict and Tension – 2 assessments.
 - b) Elizabethan England – 2 assessments.
 - c) The Challenge of Resource Management.

These assessments are to be carried out in class between March and May 2021.

- Assessments carried out prior to January 2021. Throughout Year 10 and 11 a variety of assessments were conducted using past papers. In particular Britain: Health and the People, has been covered by a number of in class assessments.



Striving for Excellence

Cirencester Kingshill School



GCSE Mathematics

The key assessments used to determine grades for GCSE Mathematics Year 11 2021 will include the following:

- Specifically focused workbooks prepared by the Mathematics Faculty.
- A range of 'Hegarty Maths' tasks defined by the Mathematics Faculty for each topic.
- A range of Edexcel examination papers/questions which have been released by the examination board for this purpose.



Striving for Excellence

Cirencester Kingshill School



GCSE Music

The key assessments used to determine grades for GCSE Music Year 11 2021 will include the following:

- All coursework that has been submitted.
- Each pupil's composition log.
- Performance marksheets from Year 10 and Year 11.
- Recordings of practical performances.
- Written assessments based on the examination board materials produced for Summer 2021.



Striving for Excellence

Cirencester Kingshill School



GCSE Photography

The key assessments used to determine grades for GCSE Photography Year 11 2021 will include the following:

- All work completed from within the photography work books.

NB: There will be no formal examination for photography this year, so the final grade will be determined solely on work produced over Year 10 and Year 11 by pupils.



Striving for Excellence

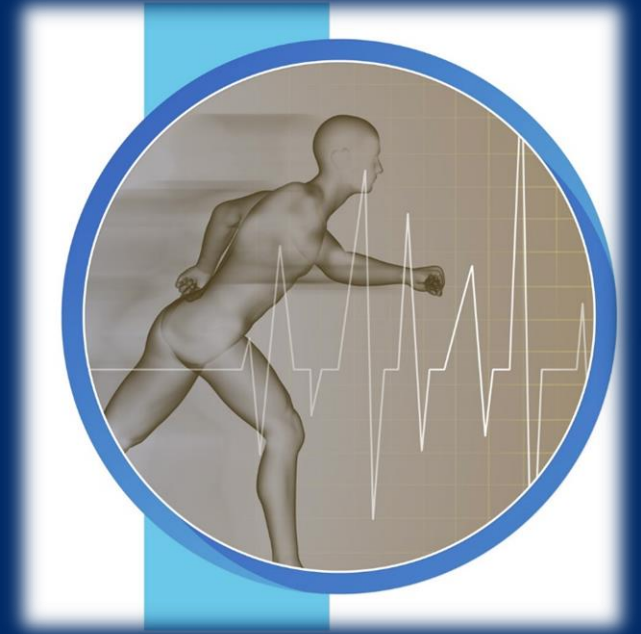
Cirencester Kingshill School



GCSE Physical Education

The key assessments used to determine grades for GCSE Physical Education Year 11 2021 will include the following:

- The PE faculty will be using theory content topic test assessments that are AQA approved, combined with examination board past papers. These assessments are taking place during term 5 of this school year
- The above assessments will be combined with the NEA Analysis and Evaluation Coursework, as well as the pupils' two assessed practical sports grades. Each of these are assessed out of 25 marks (75 in total) in line with examination board assessment standards.



Striving for Excellence

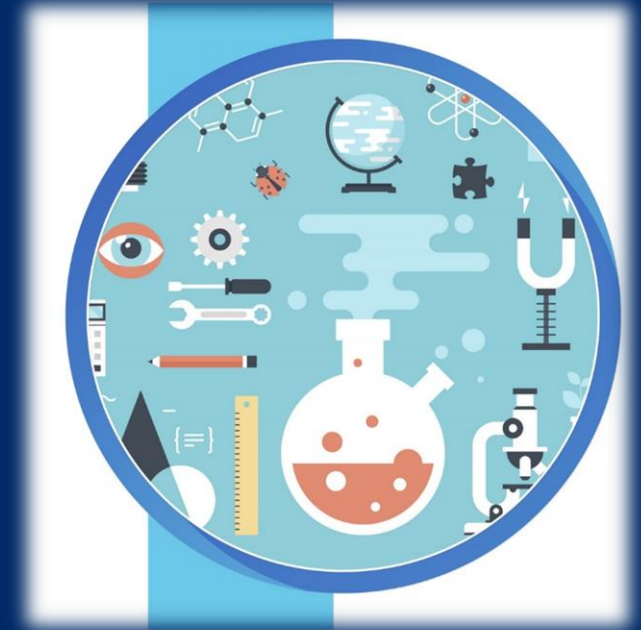
Cirencester Kingshill School



GCSE Science

The key assessments used to determine grades for GCSE Science Year 11 2021 will include the following:

- Marks from topic tests completed during Year 10 and Year 11.
- All pupils have at least 2 formal assessment papers to do, Biology and Chemistry. Both will cover Paper 2 topics.
- Triple Science pupils will have one other final assessment on Physics and will include the following:
 - a) P11 Force and Pressure.
 - b) P14 Light.
 - c) P16 Space.



Striving for Excellence

Cirencester Kingshill School



GCSE Spanish

The key assessments used to determine grades for GCSE Spanish Year 11 2021 will include the following:

- A full suite of past papers from the examination board, covering all topics taught.



Striving for Excellence

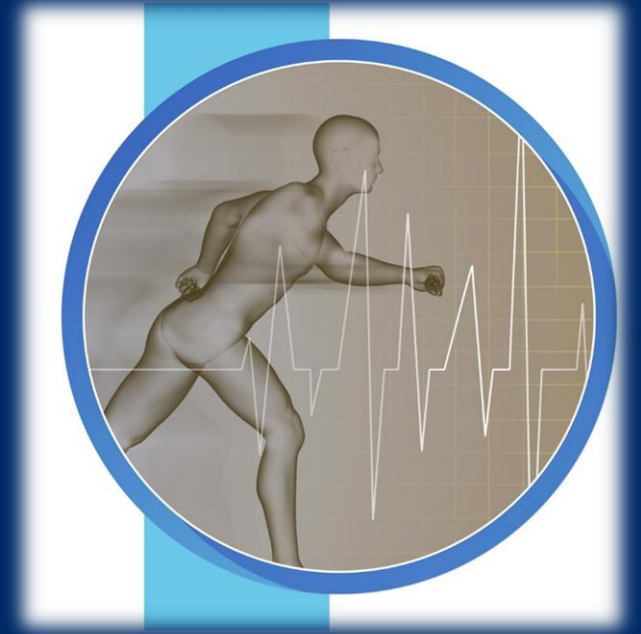
Cirencester Kingshill School



BTEC Sport

The key assessments used to determine grades for BTEC Sport Year 11 2021 will include the following:

- Unit 1: Fitness for sport and exercise - an **onscreen test which was assessed externally** by Pearson, the examination board.
- Unit 2: Practical performance in sport – **three assignments** that are internally assessed in line with examination board and school policy.
- Unit 3: Applying the principles of personal training – **four assignments** that are internally assessed in line with examination board and school policy.



Striving for Excellence

Cirencester Kingshill School



Thank you

t: 01285 651511

e: office@cirencesterkingshill.gloucs.sch.uk